



ON A NEW ROUND WORM *CYLICTROSTRONGYLUS SHINDEI* N.SP. FROM FRESH WATER FISH
MASTACEMBALUS ARMATUS (LACEP)

KHADAP R. M.

Department of Zoology, Nuthan College Sailu, Dist. Parbhani-431503 M.S. India.
(Email:- rmkhadap@gmail.com)

ABSTRACT

The present communication deal with a new species of the genus *Cylicostrongylus*. The new worm *Cylicostrongylus shindei n.sp.* is studied from fresh water fish *Mastacembelus armatus (Lacep)* from river Dudhana at Sailu .It is remarkable difference from other known species of *Cylicostrongylus* in respect to well developed bursa with three lobe, and having a simple dorsal ray, unequal spicule., Club shaped oesophagus.

KEY WORDS: *Cylicostrongylus shindei n.sp.*, Nematode Parasites, *Mastacembelus armatus*.

INTRODUCTION

The genus *Cylicostrongylus* was created by Yamaguti,1961 for *Cylicostrongylus ciareai*. with from the type of the genus later on *Cylicostrongylus thapari (M.L.Sood,1966)* species are added to this genus.This genera also added *Cylicostrongylus sailuensis (R.M.khadap,2017.)*The present communication deals with the description of a new species as *Cylicostrongylus shindei n.sp.* (Fig. 1)

MATERIALS AND METHODS

The nematodes were collected from intestine of *Mastacembelus armatus (Lacep)*. They were fixed in hot 70% alcohol and preserved in fresh 70% alcohol containing 10% glycerine. The worms were cleared in lacto phenol and mounted in glycerin. Drawings were made with help of the camera lucida and measurements are expressed in millimeters.

DESCRIPTION

The worms are small, elongated, cylindrical yellowish white in colour. The bucal capsul is thick walled and cup shaped .There are three pairs of horn like thickenings are present. one pairs ventro laterally and two pairs dorsally situated. The mouth opening is oval without lips.The oesphagus is muscular and club shaped. The cervical papillae are symmetrically.The cervical alae are absent. The cuticle is finely striated transversely.

MALE

The male is slender ,long measures about 17.28-19.42mm and width is 0.35-0.46mm. The bucal capsul measures 0.18-0.21mm long. The oesophagus is 1.27-1.36mm.long and 0.15-0.17mm wide.The nerve ring is lies at 0.52-0.58mm.The spicule are slender unequal ,broad anterirley and narrow posteriorly, left spicule is 0.66mm.and right spicule is 0.72mm in length. The gubernaculum is absent. The bursa is well developed circular divided into three asymmetrical lobe. All rays are elongated. The prebursal papillae are absent.

FEMALE

The female is longer than the male, if measures 18.24-22.04mm long and 26.15mm in wide. The anterior cervical papilla lies at 0.80mm and 0.84mm from anterior end. The vulva is preequatorial 6.31 mm,from anterior end. The tail is blunt 0.34 mm long. The eggs are oval 0.06 × 0.08 mm in size.

DISCUSSION

The genus *Cylicostrongylus* was created by Yamaguti,1961 for *Cylicostrongylus ciareai*. with from the type of the genus later on *Cylicostrongylus thapari (M.L.Sood,1966)* species are added to this genus. Latter on *Cylicostrongylus sailuensis (R.M.Khadap)* added to species this genera. The new form differ from other species, which having spicule are slender unequal in size, The bursa is well developed circular, divided into three asymmetrical lobe. Accordingly it is regarded as new with the species name *Cylicostrongylus shindei n.sp*

The species is named in honor of Prof. G. B. Shinde of Dr.B.A.M.U. Aurangabad.

Type species -	<i>Cylicostrongylus shindei</i> n.sp
Host	- <i>Mastacembelus armatus</i> (Lacep)
Habit	- Intenstine
Locality	- Saliu. Tq. Saliu. Dist. Parbhani (M.S.) India

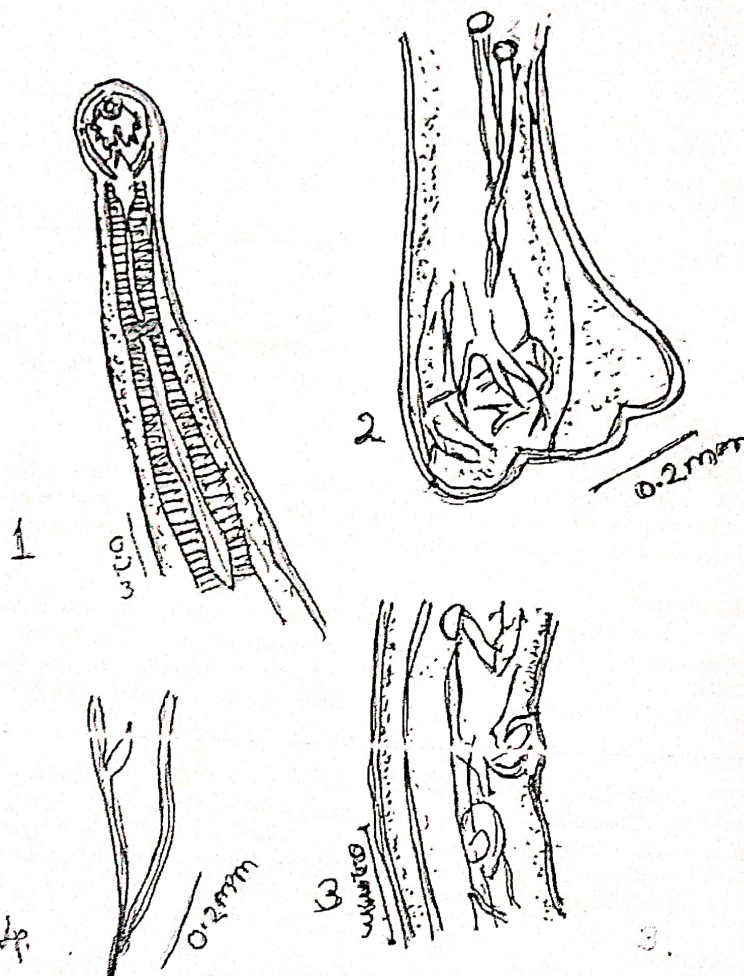


Figure I. *Cylicostrongylus shindei* n.sp.

1. Male anterior end
2. Bursa
3. Female lateral View
4. Female vulva

TFR

Trends in Fisheries Research

An International Peer-Reviewed Journal

UGC Approved Journal No: 63495

www.sciencejournal.in

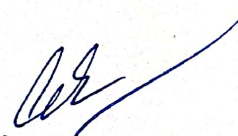


ACKNOWLEDGEMENT:

The author are thankful to the Principal Nutan Mahavidyalaya sailu, India. for providing laboratory facilities.

REFERENCES

- Ali S.M. (1956). Studies on the nematode parasites of fishes and birds found in Hyderabad State. *Indian J. Helminth.* (8):1-83.
- Agrawal V. (1965). Some new nematode parasites from fresh water fishes of Lucknow. *Indian J. Helminth.* (17):1-17.
- Karve J.N. and Naik G.G. (1951). some parasite nematodes of fishes-II. *J. Univ. Bombay, Biol. Sci. ns.* 19 (5): 1-37.
- Khadap R.M. (2017). A new species of the genus *Cylostrongylos* Yamaguti, 1961 (Nematoda: *Cylostrongyloidea*) from *(Nematoda: Cylostrongyloidea) from fresh water fish Mastacembelus armatus (Lacep)*. Trends in Parasitol. research vol.6 issue 1(2017).2319-3158(online).Dama International.
- Sood M.L. (1968). Some nematode parasites from fresh water fishes of India. *Indian J. of Helminth.* 20(2): 83-110.
- Yamaguti S. (1961). *Systema Helminthum* Vol. III The nematodes of vertebrates part I and II. Interscience publishers Ltd. London.


PRINCIPAL
Nutan Mahavidyalaya
SELU, Dist. Parbhani